

Canopy maintenance and cleaning

General information

The purpose of these instructions is to outline maintenance procedures for the PRECONTRRAINT® M2 membranes, standard inspections and cleaning procedures that are not permitted.

The Precontraint® M2 membranes, designed using the PRECONTRRAINT® technology, are subjected to detailed inspections, in adherence with the ISO9002 quality assurance system. Like all high-performance materials, the PRECONTRRAINT® M2 membranes retain their properties if they are maintained in the fashion described in these instructions.

Maintenance Inspections conditions for the Precontraint® M2 membranes

The composite structure of the PRECONTRRAINT® M2 membranes (polyester, PVC, surface treatment) makes them extra resistant to climatic and atmospheric damage: wind, sun, rain, micro-organisms, dust and miscellaneous pollution.

Maintenance involves no more than periodical or specific inspections and periodical or specific cleaning.

The frequency and the type of these inspections depends essentially on:

- the working position of the textile: in a vertical position, deposits will be less damaging than in a horizontal position.
- the exposure of the textile to climatic precipitation (rain, wind, hail, snow etc.) and organic deposits (leaves, pollen, dust etc.)
- the type and the intensity of the deposits.

Periodical inspections

The periodical inspections consist of visual checks of the membrane with regard to the following problems:

- tears on the edges and inside the panel,
- fur on the welded sections,
- thick deposits on the surface (dead leaves, insects, ash etc.).

When a problem is discovered, be sure to inform the manufacturer/installer, who will decide what action should be taken

Specific inspections

The specific inspections are similar to the periodical inspections, the difference being that they are used to assess damage caused by an exceptional accident or incident.

Such damage can be caused by the following events:

- heavy storm or high winds
- snow or hail generating weight loads
- accidental impacts of large, sharp or corrosive foreign bodies.

Canopy cleaning procedures

Periodical cleaning Specific cleaning operations

The PRECONTRAI NT® M2 membranes are particularly resistant to polluting agents for two principal reasons:

- the smooth surface has very few micro-cavities that could hold deposits on a sustainable basis.
- in the case of the FLUOTOP T2 membranes, the PVDF surface treatment forms a protective non-stick coating across the entire surface area of the textile.

However, to prevent a sedimentation of the polluting agents, the textile should be cleaned regularly.

The cleaning procedure is as follows:

Use a soft brush (nylon) or a sponge. Wash the textile with a FORMULA S detergent solution, respecting the following dosages:

Dirt	Concentration	Water temp.
Minor	5%	20°C
Medium	10%	20°C
Major	10%	50°C

Rinse with fresh, clean water

Certain deposits can be difficult to remove using the cleaning process described above. Such deposits could be formed by the following substances:

- mineral deposits.
- fatty bodies, tar, limestone.
- plant life deposits: leaves, pollen, resin.
- animal deposits: bird droppings, crushed insects.

These deposits can be too much for standard cleaning procedures. They may require the use of other products, which can be damaging to the membrane.

Before proceeding with the use of any such product, it is important to evaluate the necessity of such an action and to call on the services of a professional.

Procedures and cleaning agents not permitted for the Precontraint® M2 membranes

The resistance of the PRECONTRAI NT® M2 membranes to chemical damage depends on numerous factors such as:

- the state of the chemical agents (solid, liquid or gas),
- temperature,
- concentration,
- length of contact.

In certain cases, a mix of agents can have a damaging impact, whereas the chemical agents may be inoffensive on their own.

In view of this, the following cleaning procedures are not permitted under any circumstances:

- The following inorganic chemical products:
 - o ammonia, nitric acid, sulphuric acid acetic acid, hydrochloric acid, soda, caustic soda, bleach.
- abrasives of any type:
 - o powders, pastes, liquids, abrasive sponges etc.
 - o pressurised steam raising units
 - o non-high-pressure water boilers
- The following organic chemical products
 - o acetone, petrol, benzene, fuel oil, kerosene, perchlorethylene, turpentine, toluol, trichloroethane, oil, THF, ethyl acetate, hydrogen peroxide.

Frame maintenance and cleaning

General information

The purpose of these instructions is to outline maintenance procedures for the Vortex stainless steel frames and, standard inspections and cleaning procedures.

The frames are subject to rigorous testing and quality control, prior to assembly and fitting of the canopies and despatch, to make sure that they reach their intended place of installation.

Correctly maintained, the Vortex frames lifespan should far exceed any warranty period.

Maintenance inspections conditions for Vortex frames

The stainless steel structure of the Vortex frames makes them extra resistant to climatic and atmospheric damage: wind, sun, rain, micro-organisms, dust and miscellaneous pollution.

Maintenance involves no more than periodical or specific inspections and periodical or specific cleaning.

The frequency and the type of these inspections depends essentially on the location in which the parasol is installed.

- Coastal and exposed sites will need more regular checking cleaning
- City centre sites may need more regular cleaning to remove dirt build up, but less maintenance checks.
- Sheltered sites in non-urban areas will need less cleaning and less checking

Periodical inspections

The periodical inspections consist of visual checks of the frame, looking for any of the following issues

- Bolts coming loose
- Brown deposits on the stainless steel. This indicates contaminants, rather than rust.
- Correct positioning of the pin and the locking bar on the lower hub.
- Stress cracks in any stainless steel components.

When a problem is discovered, be sure to inform the manufacturer/installer, who will decide what action should be taken.

Specific inspections

The specific inspections are similar to the periodical inspections, the difference being that they are used to assess damage caused by an exceptional accident or incident.

Such damage can be caused by the following events:

- heavy storm or high winds
- snow or hail generating weight loads
- accidental impact.

Parasols showing any sign of damage must be closed immediately.

Bolts that have come loose should be tightened using an appropriate sized Allen key.

Check the pin position against the diagram on page 15 and correct if necessary.

Frame cleaning procedure

The frame can be cleaned with a damp sponge or cloth, using a mild soap solution, Dry with a soft cloth. A layer of car wax can be applied for additional protection.

If the surface of the stainless steel shows signs of tarnishing (this is normal). Poles and arms can be cleaned with 3M Scotchbrite abrasive pads or similar.

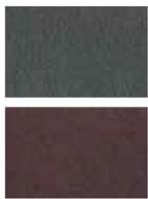
A number of products are available to help clean and maintain the appearance of the framework.

Contact your supplier for availability.

CLEANING METHODS

Problem	Cleaning Method	Comments
Standard cleaning	Soap and water	Sponge, rinse with clean water and wipe dry
Fingerprints	Soap and warm water or stainless steel cleaner	Rinse with clean water and wipe dry
Oil/grease marks, other stains and light discolouration	Pro-Railing Enviro-Shield	Follow instructions on the box
Heavy discolouration	Stainless cleaning gel	Rinse well with clean water then use Pro-Railing Enviro-Shield
Scratches on satin finish (Mirror finish will need repolishing properly)	<u>Slight scratches</u> Use fine polishing cloth coated with stainless steel cleaner <u>Deeper scratches</u> Use coarse cloth first then fine cloth with cleaner (as above)	Do not use steel based cleaning products (wire wool) as this will embed in the surface and will cause further surface damage and discolouration
Paint/ graffiti	Use a generic paint stripper dependant on type of paint	Use soft bristle brush and treat afterwards with Pro-Railing Enviro-Shield

Polishing Cloths
For removal of light scratches on stainless tube and fittings



Stainless Steel Cleaner (400ml)
Degreases & cleans surfaces ready for gluing



Stainless Cleaning gel (2kg)
Pickling gel helps remove rust, dirt and grime from stainless steel



After Care Tea Staining 3-Part Cleaner kit
Keeps stainless steel fittings in top condition long after installation



Spare Parts

Spare parts are readily available. Should there be any need for spares please contact your supplier.

Please see the diagrams on the following pages for identification of any parts required.